



ACCESSORY CATALOG



GEM® PREMIUM ELECTRIC VEHICLES | [GEMCAR.COM](https://gemcar.com)

GEM® is a registered trademark. ©2022 Waev Inc.

waev

GEM® PASSENGER VEHICLES

Transport people around campuses, facilities or neighborhoods in distinctive comfort. The GEM's spacious interior, intuitive ergonomics and open-air design make getting in and out easy. All forward-facing seats and quiet operation increase safety and promote connectivity and conversation among passengers.

THE PERFECT VEHICLE FOR:

- Student and Guest Transportation
- Valet and Customer Service
- Neighborhoods
- Police and Security Control
- Site and Campus Tours
- Families



Aluminum Wheels - Page 14



L-Box - Page 25



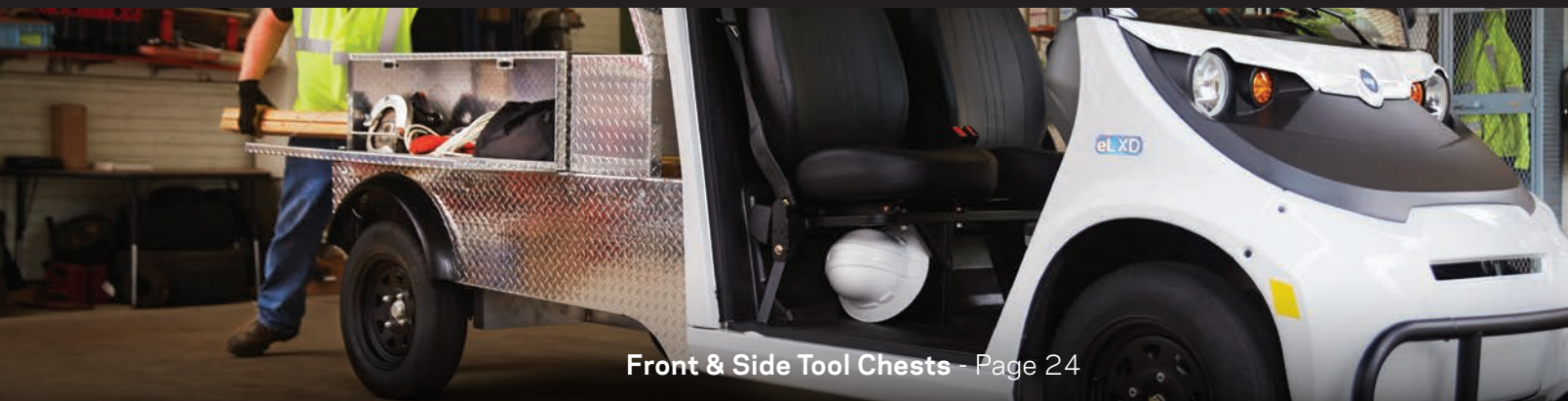
Doors - Pages 13

GEM® UTILITY VEHICLES

With 1,400 lbs. of payload, count on GEM to get the job done efficiently, economically and sustainably—with zero emissions and lower operating costs than a gas-powered van or truck. Choose from hundreds of options and accessories to create the customized vehicle you need to maximize productivity, indoors or out.

THE PERFECT VEHICLE FOR:

- Groundskeeping
- Facility Management
- Indoor Warehouse
- Housekeeping
- Hospitality
- Emergency Service



Front & Side Tool Chests - Page 24



Boxside - Page 24

Ramped Tailgate - Page 25

THE RIGHT SOLUTION

When it comes to moving people and cargo with ease and efficiency, the vehicle you choose matters. Make the smart choice with the electric GEM®. Engineered for a premium ride and long-lasting durability, the GEM has more built-in comfort and street-legal safety features than a golf cart, and it's more maneuverable, cost-efficient and sustainable than a van or truck. It offers a more spacious interior with the same compact footprint and quiet, electric power for low-cost, low-maintenance operation.

GEM can be customized to your needs—so you can drive, shuttle, haul and work with confidence that you've chosen a vehicle built for what you do. Drive one today and discover why GEM is **the smarter way to move.™**



GENUINE ENGINEERED ACCESSORIES



TABLE OF CONTENTS

POWER & CHARGING	6-9
CAB ACCESSORIES	10-12
DOORS	13
WHEELS	14
BUMPERS & WINCHES	15
LIGHTS & CAMERAS	16-17
PASSENGER CARRIERS	18-19
UTILITY CARRIERS	20-21

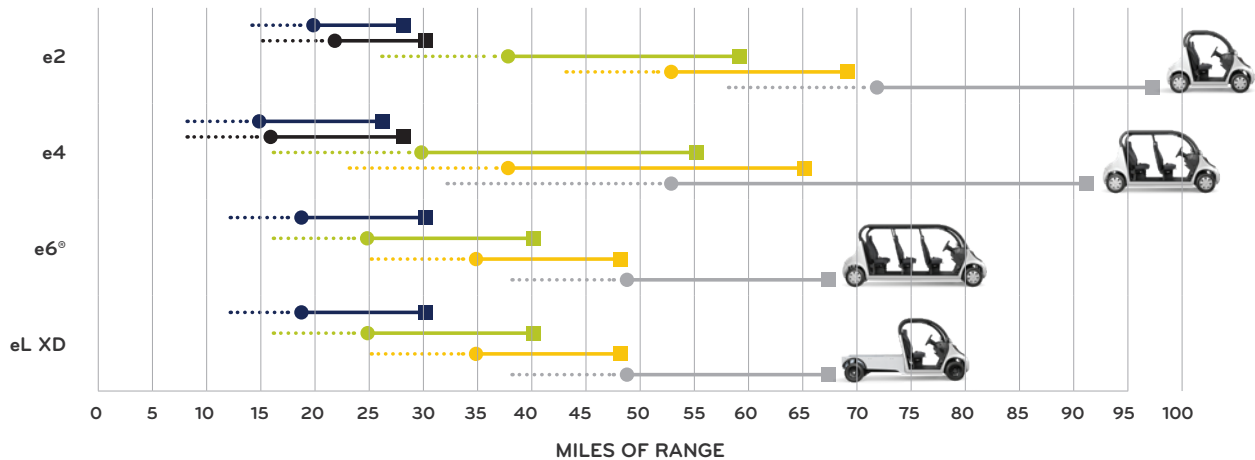
**Unless otherwise noted, accessories in this catalog fit 2016 through current models.*

SMART POWER TO MOVE YOU

Whether you travel just a few miles or drive all day, GEM® offers versatile battery and charging options to fit your range requirements and ensure your GEM will always be ready to move when you need it.

CHOOSE THE BATTERY RIGHT FOR YOU

FLOODED LEAD ACID	MAINTENANCE FREE	DISTANCE MAINTENANCE FREE	LITHIUM-ION 8.9 KWH	LITHIUM-ION 12.4 KWH
Value battery requires regular maintenance	Leak-free, spill-proof design never needs refilling	For increased distance, especially in hilly terrain	Lightweight and hard-working for maximum range and 2-3X more battery life	Maximum range for shuttle and other high-demand applications



● Range on all GEM electric vehicles will vary depending on temperature, grade, payload and driving style. Average range value includes testing at 25 mph with 332 lbs of cargo and a stop/start every 1,000 ft on a flat grade.
 ■ NEV values attained via testing in accordance with NEV America requirements with continuous use on a horizontal grade.

Individual battery information provided below.

Be sure to check for configuration needs if replacing an entire pack, as well as any other requirements.

MAKE	PART #	FITMENT	DESCRIPTION
12V Flooded Lead Acid	4014126	e2, e4	Value battery that comes standard with the vehicles. Requires regular maintenance.
6V Flooded Lead Acid	4015531 4014425	e6, eL XD	Value battery that comes standard with the vehicles. Requires regular maintenance.
Maintenance Free 12V AGM Battery	4015462	e2, e4	Maintenance free battery that never needs filling (leak-free, spill-proof)
Distance Maintenance Free 6V AGM Battery	4015463 4015041	e2, e4, e6, eL XD	Extended range maintenance free battery that never needs filling (leak-free, spill-proof)

CHOOSE THE SMARTEST FIT FOR YOU:

MAINTENANCE

- The Flooded Lead Acid will require monthly watering maintenance
- AGM batteries only require you to maintain a charge level of at least 20% and check connections monthly
- Lithium-Ion require **no maintenance**

LONG TERM BATTERY LIFE

Long term battery life is determined by the amount of times you plug your battery in to charge

- Lithium-Ion batteries have more charge cycles for a longer life span
- Batteries with more range require less frequent charging. This allows for a longer life span

CHARGE TECHNIQUES

Standard/Overnight Charging

- Speed without fast charger is overnight (8 hour) charge time. *See page 10 for fast charger information*
- Flooded and Maintenance Free batteries charge speed is reduced for the final 20%. Lithium-Ion maintain their speed

Opportunity Charging = plugging in at any battery level

- If this is a priority Lithium-Ion is the best choice, it can reduce battery life for other battery options

LITHIUM-ION BENEFITS

**Maximum Range + 2-3 x longer Battery Life + Lighter Weight + Better Acceleration
+ Easy Charging + No Regular Maintenance**

EASY CHARGING:

- Flexible charge duration
- Chargeable at any battery level
(best for opportunity charging)
- High functioning in cold weather
- **PLUS** - No regular maintenance required!

MAKE	PART #	FITMENT	DESCRIPTION
8.9 kWh Lithium-Ion Battery Pack - 44V	4017366	e2, e4, e6®, eL XD	44V Lithium-Ion battery pack - part of 8.9 kWh system providing extended range and longer life
12.4 kWh Lithium-Ion Battery Pack - 30V	4017365	e2, e4, e6, eL XD	30V Lithium-Ion battery pack - part of 12.4 kWh system providing extended range and longer life
12.4 kWh Lithium-Ion Battery Pack - 15V	4017364	e2, e4, e6, eL XD	15V Lithium-Ion battery pack - part of 12.4 kWh system providing extended range and longer life
12V Battery for use with Lithium-Ion options	4014770	e2, e4, e6, eL XD	12V battery for use with Lithium-Ion battery system to drive BMC; REQUIRED for both Lithium-Ion offerings
Lithium-Ion Battery Upfit Kit	2881852	e2, e4, e6, eL XD	Kit to upfit GEM® battery system to Lithium-Ion package (same kit for upfit to 8.9 or 12.4 system); REQUIRED for both Lithium-Ion offerings

LOOKING TO UPGRADE TO FAST CHARGER?

Three components are required to get the most out of your fast charging abilities:

- 1) the fast charger, 2) the station charger and 3) a 240V outlet.



FAST CHARGER

PART #: 4018094 - 3kW
FITMENT: e2, e4, e6®, eL XD

Charge your GEM® at accelerated speeds with a fast charger. Ordering a quantity of one 3kW charger will charge up to 3x faster and ordering a quantity of two will give you charging up to 6x faster.

These accelerated speeds are optimized when used with Lithium-Ion or Distance AGM batteries and a 240 V outlet. For 240V outlet, check city infrastructure for public options or look into at home installation.

This charger requires one of the station chargers to plug into charger receptacle.

Required, sold separately: Charger Mounting Kit (PN 2881835)

CHARGER FITMENT	3kW	6kW
Flooded	No	No
Maintenance Free	Yes	No
Distance Maintenance Free	Yes	No
Lithium-Ion 8.9 kWh	Yes	Yes
Lithium-Ion 12.4 kWh	Yes	Yes



J1772 3kW/6kW
CHARGER MOUNTING KIT

PART #: 2881853
FITMENT: e2, e4, e6, eL XD

This kit is required to install the fast charger options onto the vehicle



ENHANCED CHARGE CORD

PART #: 2883899
FITMENT: e2, e4, e6, eL XD

The upgraded charge cord plugs into a standard wall outlet but now includes an enhanced door seal that reduces the risk of water incursion and corrosion. We also added a positive, full-insertion mechanism that includes an audible click and visual confirmation that the plug is fully inserted. Furthermore, a more robust electrical connection reduces the risk of arcing.

(Note: This charge cord not compatible with J1772 charge cord. Standard on select Model Year 18 vehicles, standard on Model Year 19 to current.)



SOLAR

PART #: 2881506
FITMENT: e4

PART #: 2881507
FITMENT: e6®, eL XD (with 2881663)

Extend your time between charges and battery life with a renewable source of energy - the sun!

The solar panel is lightweight, non-glass high efficiency Mono Crystalline Solar which is hail and impact resistant

Specifically designed and programmed to work with and match the 48V battery set systems

Does not work with: Lithium-Ion



BATTERY WATERING KITS

PART #: 2881635 - 12V
FITMENT: e2, e4

PART #: 2881636 - 6V
FITMENT: e6, eL XD

Filler works by replacing the battery's existing vent caps with valves that are interconnected with tubing, allowing the user to fill all cells of the battery from a single remote location

Each valve independently shuts off water flow to the cell when the proper electrolyte level is reached, allowing the batteries to be filled perfectly each time



GEM CAB ACCESSORIES



Beachwood Tan



Beachwood and Black

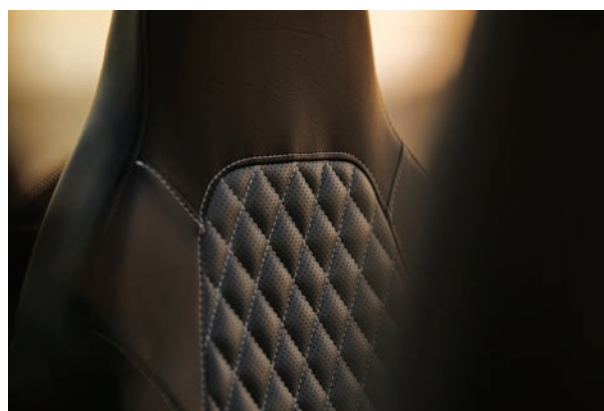
PREMIUM UPHOLSTERY SEATS

PART #: 2692266-VGA (BLK/GRY)
FITMENT: e2, e4, e6®

PART #: 2692266-VTA (BLK/TAN)
FITMENT: e2, e4, e6®

PART #: 2692266-VTB (TAN)
FITMENT: e2, e4, e6®

Ergonomic high-back bucket seats covered in weather-resistant, vegan leather fabrics. Available in Avalanche Gray and Black, Beachwood Tan, or Beachwood and Black.



Avalanche Gray and Black



RUBBER FLOOR MATS

PART #: 5416119 - Front
FITMENT: e2, e4, e6, eL XD

PART #: 5416120 - Rear
FITMENT: e4, e6

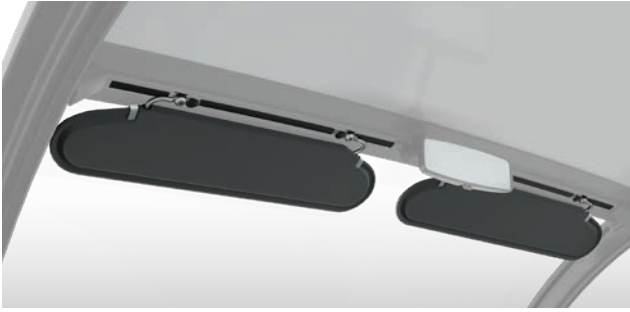
Protects your floors from scuff marks, and provides added traction



CENTER CONSOLE WITH CUPHOLDERS

PART #: 2881674
FITMENT: e2, e4, e6, eL XD

Add additional cupholders between the seats with this convenient center console



VISOR

PART #: 2884227
FITMENT: e2, e4, e6®, eL XD

Enhance comfort and safety by blocking the sun and increasing visibility



ELECTRONIC POWER STEERING (EPS)

PART #: 2882508
FITMENT: e2, e4, e6, eL XD

Electric Power Steering allows for a more comfortable and effortless driving experience.



WINDSHIELD WASHER

PART #: 2881863
FITMENT: e2, e4, e6, eL XD

Keep your windshield free of dirt and debris



HEATER KIT

PART #: 2882717
FITMENT: e2, e4, e6, eL XD

Provides fan and heat source to raise cab temperatures in electric vehicles

Easy installation, includes heater, fan, mounting hardware, blower ducts and wiring



LIGHTNING AUDIO STEREO

PART #: 2882314
FITMENT: e2, e4, e6, eL XD

The Lightning Audio LA-1500BT Stereo features large 6.5" Rockford Fosgate speakers with a built-in amplifier, AM/FM radio, Bluetooth wireless technology, app control for smartphones, USB port and front auxiliary input

Face plate is detachable for added security



SPEED KEY

PART #: 2883054
FITMENT: e2, e4, e6®, eL XD

GEM® owner controls the performance available to individual drivers with this speed key. The kit is mounted under the hood to govern vehicle speed between either 10 mph or 15 mph and 25 mph. 25 mph is the speed that an LSV used on road must legally travel. Dealer installation and re-flash required



COVERS

PART #: 2687218
FITMENT: e2

PART #: 2687219
FITMENT: e4

PART #: 2687220
FITMENT: e6

PART #: 2687221
FITMENT: eL XD

Protects your vehicle in short or long term storage

Water-resistant, washable, and designed not to scratch the finish of your vehicle

Features a cinch strap to ensure a tight fit

HOW TO ORDER GEM® DOORS

A STEP-BY-STEP GUIDE FOR ORDERING DOORS FOR DEALER INSTALLATION

See your local dealer for full details and ordering information.

STEP 1

CHOOSE YOUR DOOR MOUNTING KIT.

This kit includes the framing to which the doors mount. The kits vary by vehicle model. All door options require a door mounting kit.

PART #	KIT	MODEL
2881857	Door Mounting Kit	e2, eL XD
2881858	Door Mounting Kit	e4
2881859	Door Mounting Kit	e6®

STEP 2

CHOOSE YOUR FILLER COLOR.

This part includes the filler panels in the front and rear of the vehicle to close the gaps between the frame and door. The kits need to be ordered to match vehicle model AND door color. This kit is required for mounting all door options.

PART #	KIT	MODEL
2881860-666	Black Filler Kit	e2, e4, e6, eL XD
2881860-599	White Filler Kit	e2, e4, e6, eL XD

STEP 3

CHOOSE YOUR DOOR TYPE AND COLOR.

Doors are ordered in quantities of one. Ensure you order the same color, door type and appropriate quantities of each door needed.

A Rear Window (PN 5452161) is recommended to complete the cab enclosure if one wasn't installed at the factory as an option upgrade. *Adhesive Kit (PN 2882097) required, sold separately



FRONT FULL HARD DOOR

FITMENT: e2, e4, e6®, eL XD

COLOR	PART #
Driver's Side Black	2635825-666
Driver's Side White	2635825-599
Passenger Side Black	2635826-666
Passenger Side White	2635826-599



MIDDLE/REAR FULL HARD DOOR

FITMENT: e4, e6

COLOR	PART #
Driver's Side Black	2635827-666
Driver's Side White	2635827-599
Passenger Side Black	2635828-666
Passenger Side White	2635828-599

*Red and Blue front, middle and rear doors available. Contact your dealer for more information.

GEM WHEELS



ALUMINUM WHEELS (14 X 165)

PART #: 1522553

FITMENT: e2, e4, e6®, eL XD

Add styling to your GEM® with an aluminum rim

Tires offer a smooth ride

Rated for on-road driving

Sold individually: order quantity of 4 for complete set



PLASTIC HUBS

PART #: 1522584

FITMENT: e2, e4, e6, eL XD

Add a bit of style and curb appeal to your GEM while still keeping your costs down

Not compatible with aluminum rims, sold individually



BUMPERS & WINCHES



FRONT RUGGED BUMPER

PART #: 2881627
FITMENT: e2, e4, e6®, eL XD

The rugged bumper adds extra front protection for heavy-duty work applications
Powder-coated steel
Does not work with: Front Chrome Bumper



PREMIUM FRONT BUMPER

PART #: 2881629
FITMENT: e2, e4, e6, eL XD

Enhance the styling of your GEM® with a polished finish
Protect your vehicle from scratches and dings
Does not work with: Front Rugged Bumper



REAR RUGGED BUMPER WITH HITCH

PART #: 2882458
FITMENT: e2, e4, e6

Powder coated steel
Protect your vehicle from scratches and dings
1 ¼ inch receiver
Does not work with: Rear Chrome Bumper



PREMIUM REAR BUMPER

PART #: 2881630
FITMENT: e2, e4, e6, eL XD

Enhance the styling of your GEM with a polished finish
Protect your vehicle from scratches and dings
Does not work with: Rear Rugged Bumper

REAR RUGGED BUMPER WITH HITCH

PART #: 2881628
FITMENT: eL XD

Powder coated steel
Protect your vehicle from scratches and dings
2 inch receiver
Does not work with: Rear Chrome Bumper



GEM LIGHTS & CAMERAS



PREMIUM LED HEADLIGHTS

PART #: 2413644

FITMENT: e2, e4, e6®, eL XD

Upgrade to premium and get daytime running lights to make your GEM® more visible to others along with additional LED bulbs for increased visibility at night

Qty. 1



REVERSE LIGHT KIT

PART #: 2413085

FITMENT: e2, e4, e6, eL XD

Reverse lights give added safety so those around you know when your backing up





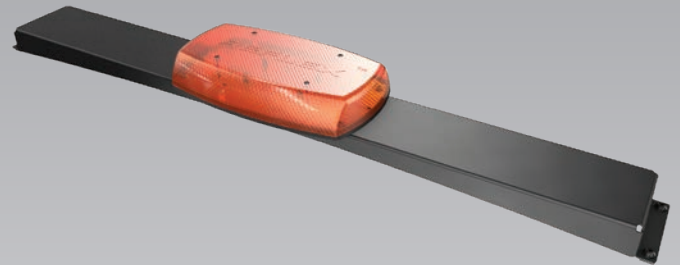
LED BEACON LIGHT

PART #: 2881802
FITMENT: e2, e4, e6, eL XD

Great for industrial applications

Amber colored roof mounted beacon light adds visibility for safer operation

Does not work with: Light Bar



LED LIGHT BAR

PART #: 2881803
FITMENT: e2, e4, e6®, eL XD

Great for industrial applications

Amber colored roof mounted bar light adds visibility for safer operation

Does not work with: Beacon Light

GEM PASSENGER CARRIERS



S-BED

PART #: 2882431
FITMENT: e2, e4, e6®

Easily convert the back of your GEM® to carry more cargo. This bed allows for up to 330 pounds of payload when installed. It is 32.5x42.5 inches, made of space age material and has 4 D-rings to help secure your cargo



S-BED SOLID SIDES

PART #: 2882432
FITMENT: e2, e4, e6

Durable support for hauling and transporting larger, bulky loads. Solid sides help eliminate cargo from falling out
S-box sides are made of aluminum with spring loaded latch for the hinged tailgate to make it easy to load and unload
Required, sold separately: S-Bed (PN 2882431)
Does not work with: Trunk Back and Linkback



S-BOX

PART #: 2882713
FITMENT: e2, e4, e6

Lockable, weather-tight, enclosed cargo carrier is perfect for transporting food and cargo, supplies or tools

Features hinged supported door and high-quality lockable door latch

Large, 23 cu ft storage capacity

Dimensions 28" x 38" x 38"

Does not work with trunkback or linkback.
Requires S-bed and Solid Sides.



TRUNK BACK

PART #: 2881504
FITMENT: e2, e4, e6

Lockable and removable design that is easy to install and remove
Perfect for groceries or other small cargo

Measures 33" x 16" x 15"

100 lb. carrying capacity

Does not work with: S-Bed, Solid Sides, Linkback and Rear Cargo Net



REAR CARGO NET

PART #: 2881915
FITMENT: e2, e4, e6

Helps secure your load

Designed to be used with passenger carriers, such as S-bed and S-bed Solid Sides

Requires Tie Downs (PN 2881781)



TIE DOWNS

PART #: 2881781
FITMENT: e2, e4, e6

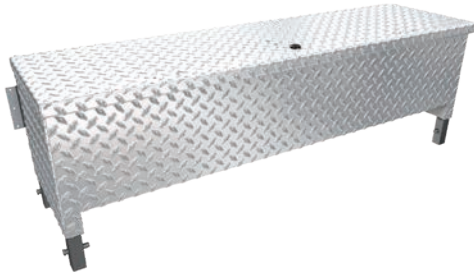
Help secure your cargo with these easy to install tie downs

Required, sold separately: S-Bed (PN 5262121)

Does not work with: Trunk Back and Linksback



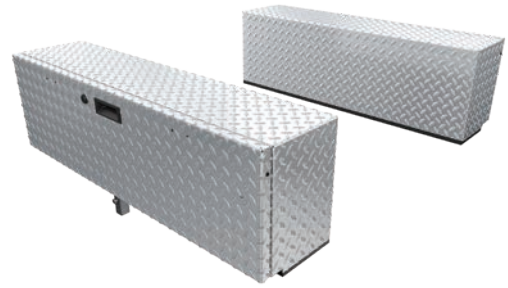
GEM UTILITY CARRIERS



FRONT TOOL CHEST

PART #: 2881632
FITMENT: eL XD

Keep tools and equipment in a convenient location
Lockable for added security
Measures 47.25" x 20" x 19.5" and has a 200 lb. carrying capacity
Does not work with: Front Panel



SIDE TOOL CHEST

PART #: 2881633
FITMENT: eL XD

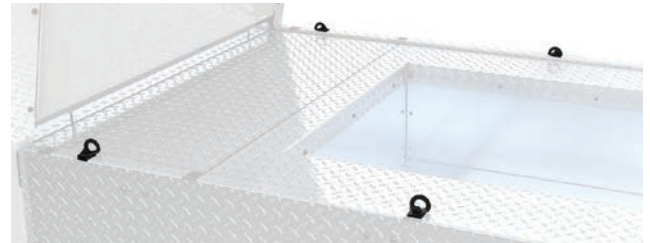
Fits the length of the flat bed and allows an open space in between for items that won't fit inside the boxes
Lockable for added security
Does not work with: Boxside and L-Box



BOXSIDE

PART #: 2883090
FITMENT: eL XD

Durable support for hauling and transporting larger, bulky loads
Easy to remove sides for oversized loads
Solid sides help eliminate cargo from falling out
Hinged for easy access
Required, sold separately: Front Panel (PN 2881778), or Front Tool Chest (PN 2881632) with Boxside Tool Chest Adapter (PN 2881780) for mounting
Does not work with: L-Box



eL XD BED TIE DOWNS

PART #: 2881722
FITMENT: eL XD

Help secure your cargo with these easy to install stainless tie down brackets



LADDER RACK

PART #: 2881663
FITMENT: eL XD

Ideal for transporting long items such as ladders, pipe, lumber or other building and maintenance supplies
Rated for up to 75 lbs. of cargo
Can be installed with Bed Sides or Tool Chests
Does not work with: L-Box



RECESSED BED COVER

PART #: 2881681
FITMENT: eL XD

These panels create a flat bed on the eL XD for hauling



FRONT PANEL

PART #: 2881778
FITMENT: eL XD

Used with solid sides without Front Tool Chest
Durable support for hauling and transporting larger, bulky loads
Protects cabin from loads in box
Required, sold separately: Boxsides (PN 2881777)
Does not work with: L-Box and Side Tool Chest



FOLD DOWN STAKEBACK

PART #: 2881682
FITMENT: eL XD

Durable support for hauling and transporting larger, bulky loads
Easy to remove sides for oversized loads



L-BOX

PART #: 2882712
FITMENT: eL XD

Features a 44 inch high cab canopy box, lined rear door and full length side door for easy access to cargo
Made of aluminum with an enamel white finish
Does not work with: Boxside, Ladder Rack, Front Tool Chest, Side Tool Chest and Front Panel



LADDER RACK ACCESSORY FOR L-BOX

PART #: 2883089
FITMENT: eL XD

Commercial truck inspired accessory to mount on L-Box, ideal for transporting long items like ladders, pipe, lumber or building and maintenance supplies
Rated for up to 75 lbs of cargo
Required, sold separately: L-Box (PN 2882712)



HINGED TAILGATE

PART #: 2881869
FITMENT: eL XD

Hinged tailgate drops down for easy loading/unloading of cargo



RAMPED TAILGATE

PART #: 2881870
FITMENT: eL XD

Roll heavy cargo on and off your GEM®



GEM®

GEM vehicles comply with the NHTSA Low Speed Vehicles rules and regulations and can be operated on many streets with posted speed limits of 35 mph or less. Check local laws regarding street use and vehicle equipment requirements. Drivers must be at least 16 years old with a valid driver's license. Driver and passengers should always wear seat belts. Where appropriate for work and riding conditions, helmets and eye protection should also be worn. Never engage in stunt driving, and avoid excessive speeds and sharp turns. Never drink and drive. Range on all GEM electric vehicles will vary depending on temperature, grade, payload, and driving style. All pricing, specifications, claims, and information contained in this brochure are based on information available at the time of publication. GEM assumes no responsibility for any inaccuracies, opinions, or omissions in those publications. All pricing, specifications, and descriptions are subject to change without notice, and GEM assumes no responsibility for changes in pricing or specifications. Unless otherwise noted, all trademarks are the property of Waev, Inc. ©2022 Waev, Inc.

GEM® PREMIUM ELECTRIC VEHICLES | GEMCAR.COM

GEM® is a registered trademark. ©2022 Waev Inc.

waev